



CO2 VALUE

Premises:

IRMCO Lab has gone over the Co2 impact of our products. The first rough numbers are coming out. In the future, we will be more precise, but still, the world is not set up for a common calculation method.

How many Co2 kg are generated for building 1000 lt / 1 Ton of any IRMCO Products?

IRMCO GEL (not possible to dilute the product) apx:

0,09 KG Co2-e/tonne.

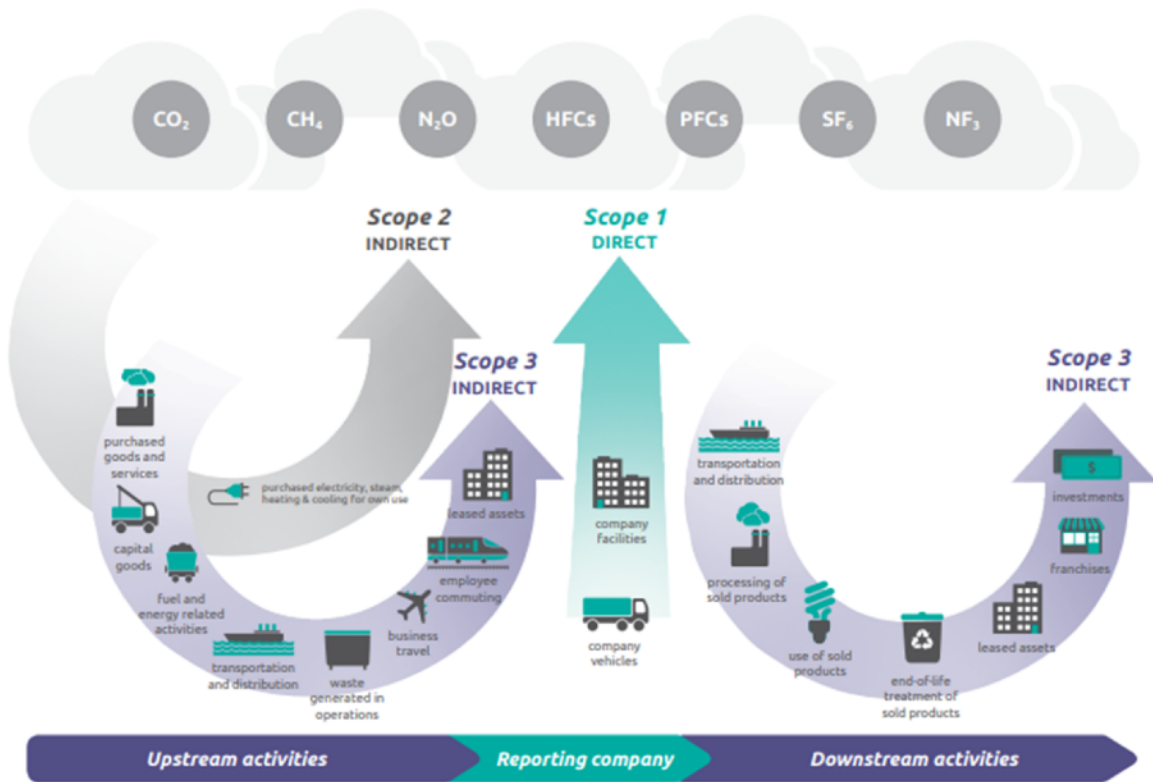
IRMCO FLUIDS in a dilution from 10% to 50%?

From 0,009 to 0,047 KG Co2-e/tonne.

What number are those?

CO2 impact is calculated variously and is the addition of 3 specific “Scope”

Figure [1] Overview of GHG Protocol scopes and emissions across the value chain



A simple description can be something like this:

Scope 1 - emission generated by the usage of natural gas and use of other fuels.

Scope 2 - electricity

Scope 3 - raw material Co2 number given by the suppliers.



Why so important the Co2 calculation?

Following the Green Deal worldwide, as of right now, in January 2026 will be possible to buy and sell Co2 in processes and any operation will be taxed consequently the Kg Co2 e/tonne produced.

This means that any low emission will give any product a lower production cost and a more competitive market position.

Could happen that a lubricant will be not accepted if generating too much Co2 except the company can buy Co2 from the next Co2 Banks but this operation will be for sure an additional cost for the company itself.

What IRMCO is doing now?

IRMCO has generated those numbers based on an average method now in use by main consultant companies around the world which are interpreting the Green Deal drafts. IRMCO is still waiting for the supplier’s numbers for having the total picture because now Scope 3 is missed, but.... Whatever will be those numbers will be for sure minimal, probably not even changing the final numbers gotten by Scope 1 & 2.

Why this bulletin now?

Because more and more, we are asked to give some rough numbers of Co2 Impact and also involved with several consultants around the world asking for.

Comparison terms

As you probably remember some months ago I was sending this data list about food consumption and Co2 impact. As you can see we are much lower than even tap water, or a simple apple at Breakfast:

Dinner	Tap Water		0-0.1	https://apps.carboncloud.com/climatehub/product-reports/id/5435817490
Dinner	Tap Water		0-0.1	https://apps.carboncloud.com/climatehub/product-reports/id/5435817490

Detailed data - 3 next pages

Here below you will find the specific data product per product in the main dilutions used worldwide. Please remember that with our MQL system, the application is so minimal that those numbers/Ton/Litres must be also divided 1000 times for having per gram.

Very often, for example for bending tubes, less than 1 gram is used per bend. Hope you understand the clear picture and our very low impact at all.



IRMCO PRODUCTS - CO2 Emission chart

PRODUCT	DILUTION	Scope 1	Scope 2	Scope 3	Total / ton	Total / Lt
980 000	0%	81,90	11,80	0	93,700	0,094
980 301	0%	81,90	11,80	0	93,700	0,094
980 020	0%	81,90	11,80	0	93,700	0,094
980 460	0%	81,90	11,80	0	93,700	0,094
980 986	0%	81,90	11,80	0	93,700	0,094
980 080	0%	81,90	11,80	0	93,700	0,094
	10%	8,19	1,18	0	9,370	0,009
	15%	12,29	1,77	0	14,055	0,014
	20%	16,38	2,36	0	18,740	0,019
	25%	20,48	2,95	0	23,425	0,023
	30%	24,57	3,54	0	28,110	0,028
	40%	32,76	4,72	0	37,480	0,037
980 103	0%	81,90	11,80	0	93,700	0,094
	10%	8,19	1,18	0	9,370	0,009
	15%	12,29	1,77	0	14,055	0,014
	20%	16,38	2,36	0	18,740	0,019
	25%	20,48	2,95	0	23,425	0,023
	30%	24,57	3,54	0	28,110	0,028
	40%	32,76	4,72	0	37,480	0,037
980 109	0%	81,90	11,80	0	93,700	0,094
	10%	8,19	1,18	0	9,370	0,009
	15%	12,29	1,77	0	14,055	0,014
	20%	16,38	2,36	0	18,740	0,019
	25%	20,48	2,95	0	23,425	0,023
	30%	24,57	3,54	0	28,110	0,028
	40%	32,76	4,72	0	37,480	0,037
980 113	0%	81,90	11,80	0	93,700	0,094
	10%	8,19	1,18	0	9,370	0,009
	15%	12,29	1,77	0	14,055	0,014
	20%	16,38	2,36	0	18,740	0,019
	25%	20,48	2,95	0	23,425	0,023
	30%	24,57	3,54	0	28,110	0,028
	40%	32,76	4,72	0	37,480	0,037
	50%	40,95	5,90	0	46,850	0,047



PRODUCT	DILUTION	Scope 1	Scope 2	Scope 3	Total / ton	Total / Lt
980 122	0%	81,90	11,80	0	93,700	0,094
	10%	8,19	1,18	0	9,370	0,009
	15%	12,29	1,77	0	14,055	0,014
	20%	16,38	2,36	0	18,740	0,019
	25%	20,48	2,95	0	23,425	0,023
	30%	24,57	3,54	0	28,110	0,028
	40%	32,76	4,72	0	37,480	0,037
980 135	50%	40,95	5,90	0	46,850	0,047
	0%	81,90	11,80	0	93,700	0,094
	10%	8,19	1,18	0	9,370	0,009
	15%	12,29	1,77	0	14,055	0,014
	20%	16,38	2,36	0	18,740	0,019
	25%	20,48	2,95	0	23,425	0,023
	30%	24,57	3,54	0	28,110	0,028
980 136	40%	32,76	4,72	0	37,480	0,037
	50%	40,95	5,90	0	46,850	0,047
	0%	81,90	11,80	0	93,700	0,094
	10%	8,19	1,18	0	9,370	0,009
	15%	12,29	1,77	0	14,055	0,014
	20%	16,38	2,36	0	18,740	0,019
	25%	20,48	2,95	0	23,425	0,023
980 146	30%	24,57	3,54	0	28,110	0,028
	40%	32,76	4,72	0	37,480	0,037
	50%	40,95	5,90	0	46,850	0,047
	0%	81,90	11,80	0	93,700	0,094
	10%	8,19	1,18	0	9,370	0,009
	15%	12,29	1,77	0	14,055	0,014
	20%	16,38	2,36	0	18,740	0,019
980 156	25%	20,48	2,95	0	23,425	0,023
	30%	24,57	3,54	0	28,110	0,028
	40%	32,76	4,72	0	37,480	0,037
	50%	40,95	5,90	0	46,850	0,047
	0%	81,90	11,80	0	93,700	0,094
	10%	8,19	1,18	0	9,370	0,009
	15%	12,29	1,77	0	14,055	0,014



PRODUCT	DILUTION	Scope 1	Scope 2	Scope 3	Total / ton	Total / Lt
980 156UK	0%	81,90	11,80	0	93,700	0,094
	10%	8,19	1,18	0	9,370	0,009
	15%	12,29	1,77	0	14,055	0,014
	20%	16,38	2,36	0	18,740	0,019
	25%	20,48	2,95	0	23,425	0,023
	30%	24,57	3,54	0	28,110	0,028
	40%	32,76	4,72	0	37,480	0,037
980 313	50%	40,95	5,90	0	46,850	0,047
	0%	81,90	11,80	0	93,700	0,094
	10%	8,19	1,18	0	9,370	0,009
	15%	12,29	1,77	0	14,055	0,014
	20%	16,38	2,36	0	18,740	0,019
	25%	20,48	2,95	0	23,425	0,023
	30%	24,57	3,54	0	28,110	0,028
980 323	40%	32,76	4,72	0	37,480	0,037
	50%	40,95	5,90	0	46,850	0,047
	0%	81,90	11,80	0	93,700	0,094
	10%	8,19	1,18	0	9,370	0,009
	15%	12,29	1,77	0	14,055	0,014
	20%	16,38	2,36	0	18,740	0,019
	25%	20,48	2,95	0	23,425	0,023
980 323K	30%	24,57	3,54	0	28,110	0,028
	40%	32,76	4,72	0	37,480	0,037
	50%	40,95	5,90	0	46,850	0,047
	0%	81,90	11,80	0	93,700	0,094
	10%	8,19	1,18	0	9,370	0,009
	15%	12,29	1,77	0	14,055	0,014
	20%	16,38	2,36	0	18,740	0,019
980 819	25%	20,48	2,95	0	23,425	0,023
	30%	24,57	3,54	0	28,110	0,028
	40%	32,76	4,72	0	37,480	0,037
	50%	40,95	5,90	0	46,850	0,047
	0%	81,90	11,80	0	93,700	0,094
	10%	8,19	1,18	0	9,370	0,009
	15%	12,29	1,77	0	14,055	0,014
IRF25 EV1	20%	16,38	2,36	0	18,740	0,019
	25%	20,48	2,95	0	23,425	0,023
	30%	24,57	3,54	0	28,110	0,028
	40%	32,76	4,72	0	37,480	0,037
	50%	40,95	5,90	0	46,850	0,047
	0%	81,90	11,80	0	93,700	0,094
	10%	8,19	1,18	0	9,370	0,009